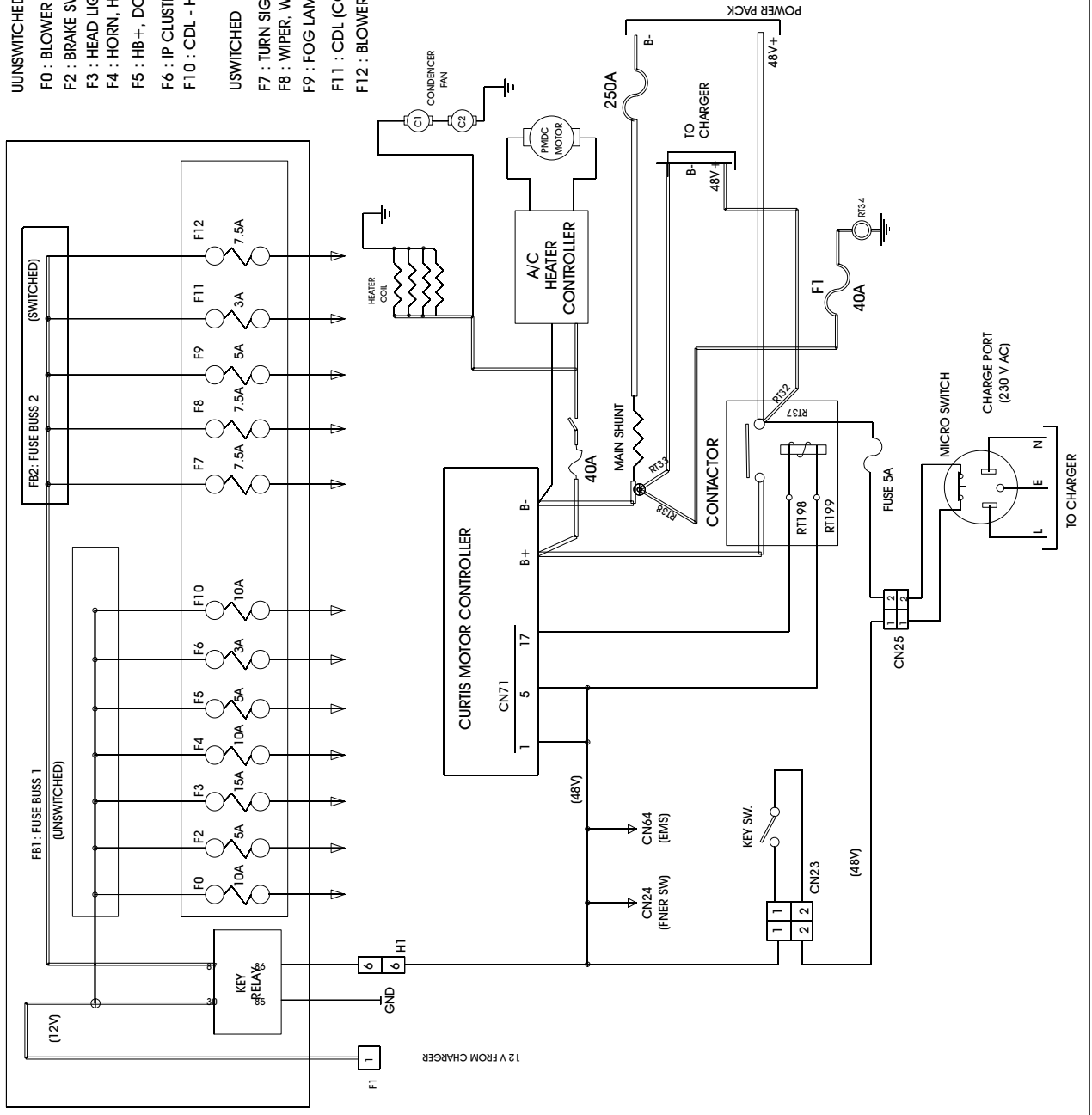


12V and 48V Circuit

FUSE BOX ASSEMBLY



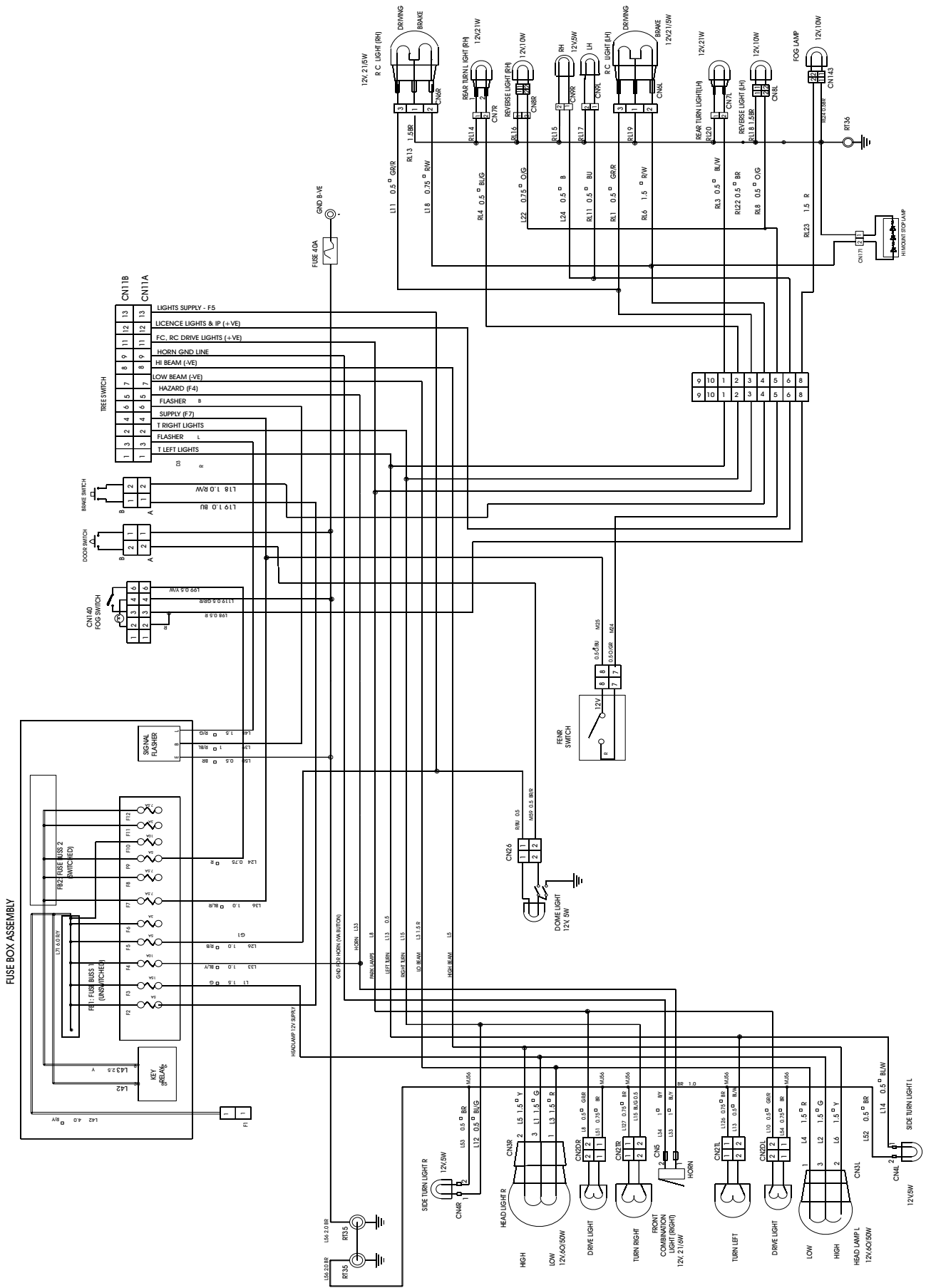
UNSWITCHED

- F0 : BLOWER HI SPEED,REMOTE RELAY,LOGIC BOARD
- F2 : BRAKE SW, BATTERY FAN, CHIME,CHARGER COOLING FAN
- F3 : HEAD LIGHTS
- F4 : HORN, HAZARDS LIGHTS
- F5 : HB+, DOME LIGHT, DRIVE LIGHTS,LICENCE LIGHTS
- F6 : IP CLUSTER (WARNING LIGHTS),TAPE PLAYER
- F10 : CDL - HAZARD LIGHTS

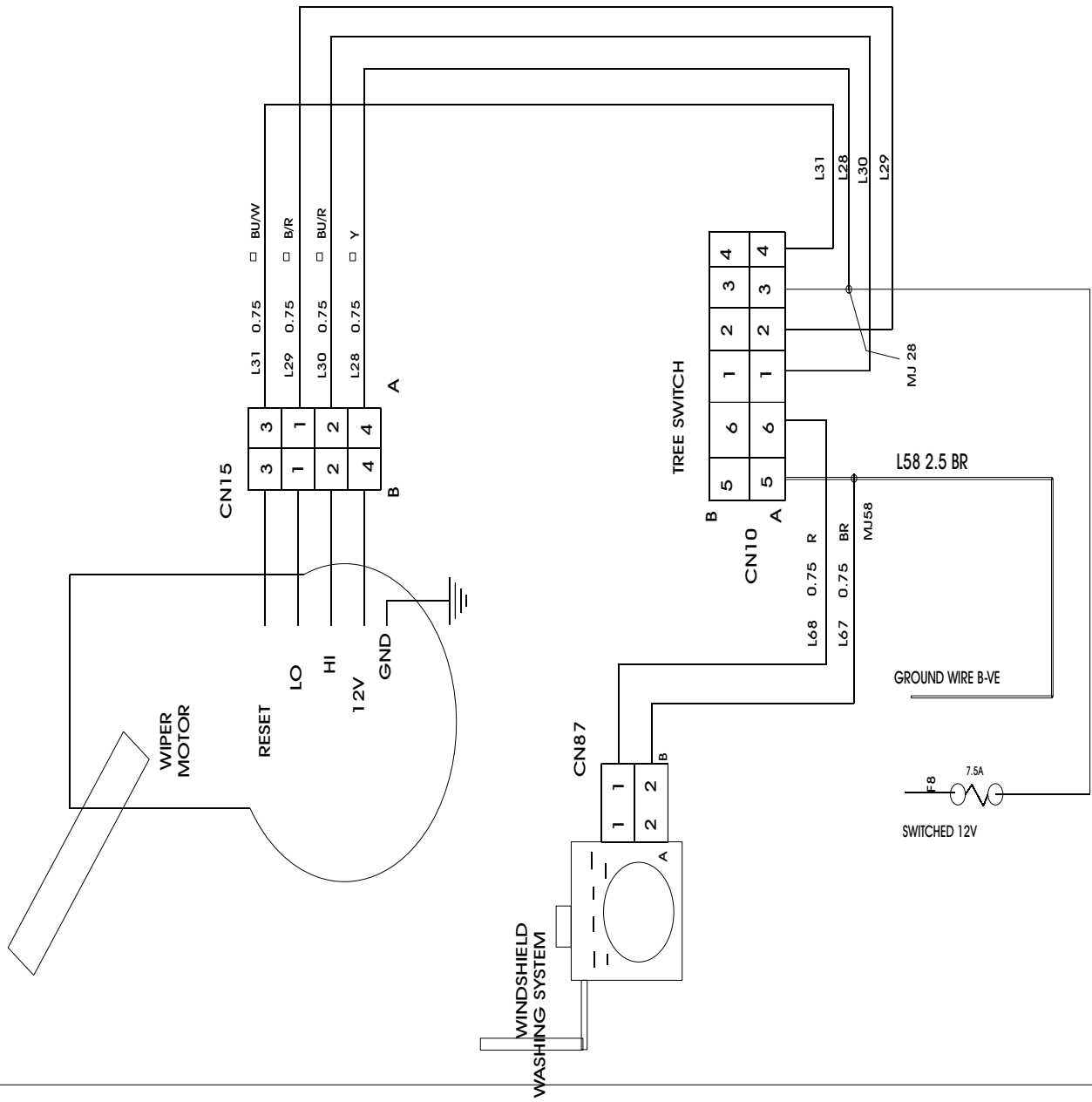
USWITCHED

- F7 : TURN SIGNALS, REVERSE LIGHTS
- F8 : WIPER, WASHER
- F9 : FOG LAMP
- F11 : CDL (CONTROLS)
- F12 : BLOWER,LOGIC BOARD

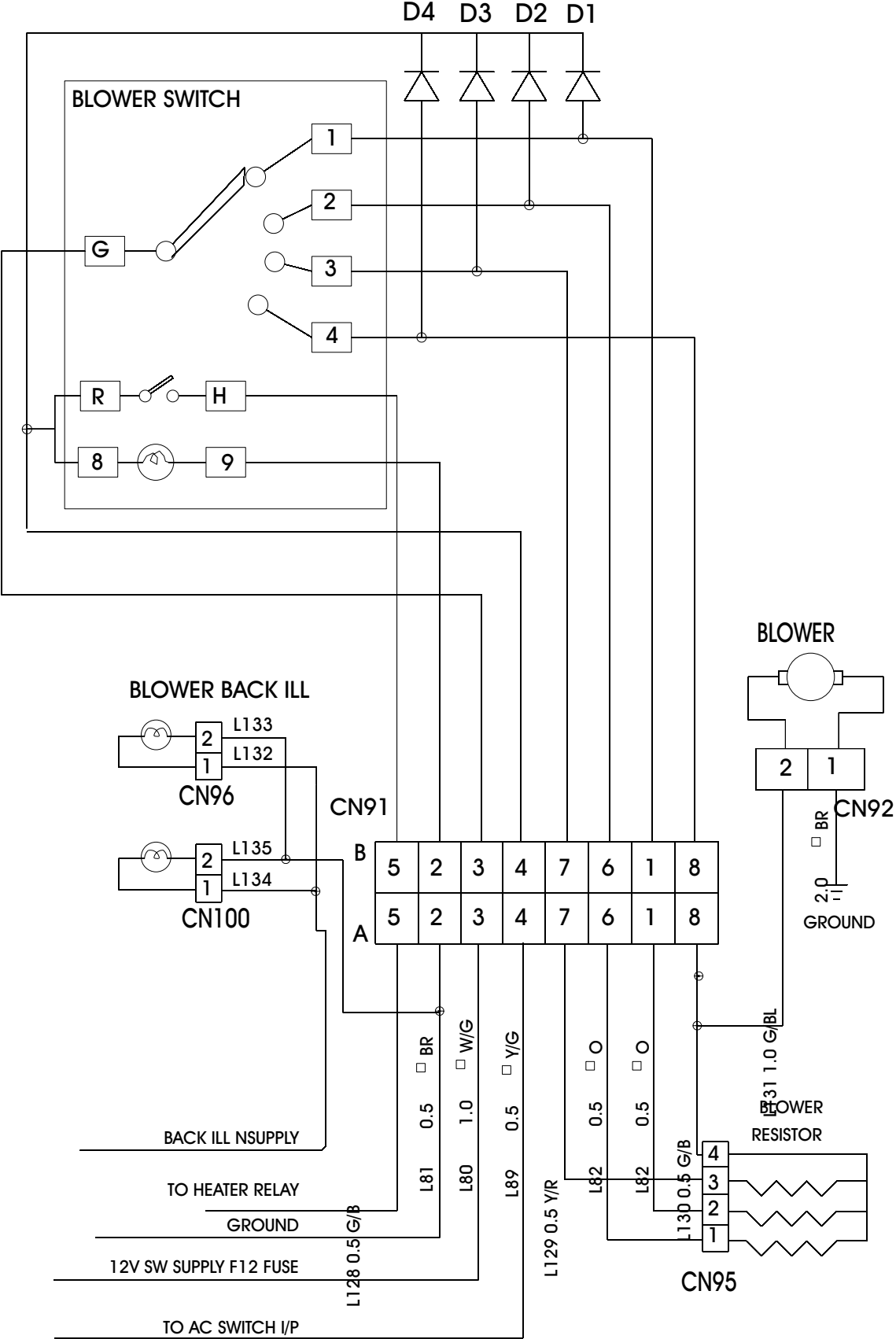
LIGHTING SYSTEM



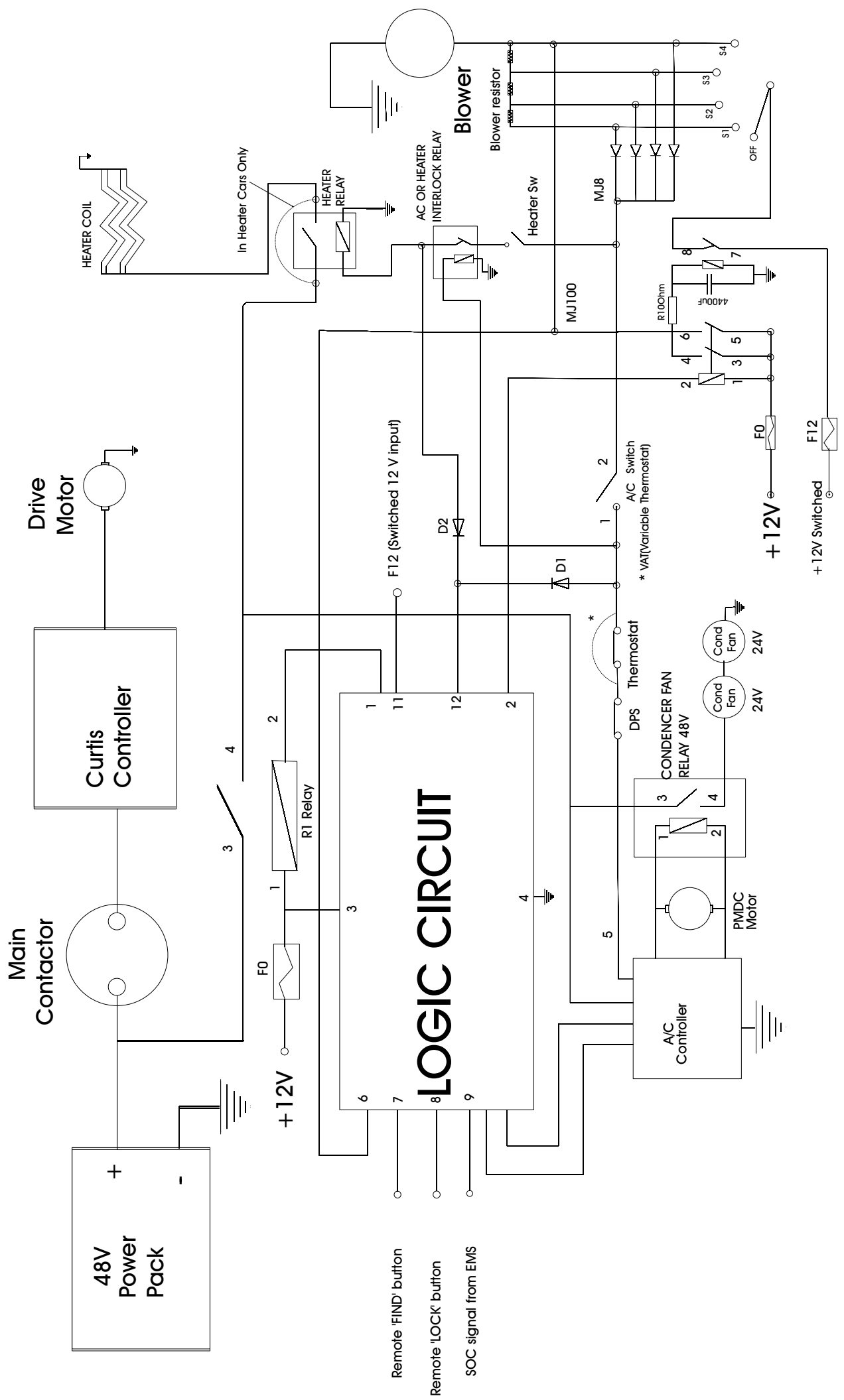
WIPER MOTOR



BLOWER WIRING



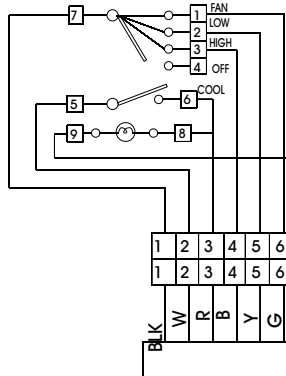
CONNECTION DIAGRAM FOR AC & HEATER WITH REMOTE OPERATION



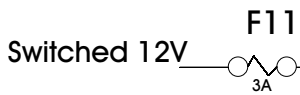
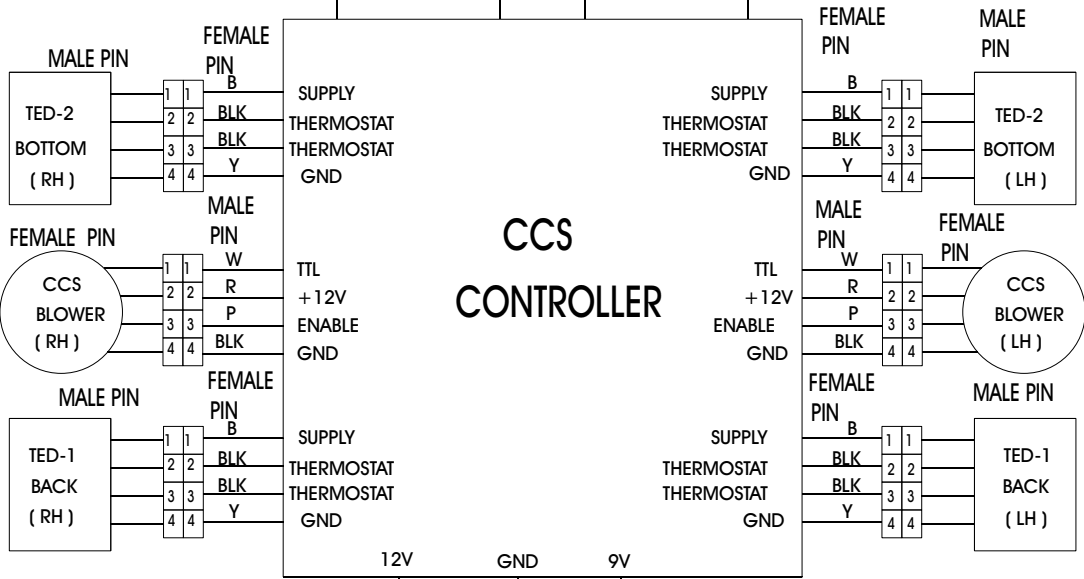
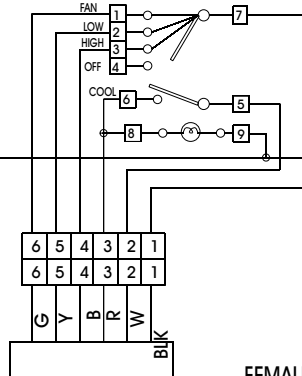
Remote 'FIND' button
 Remote 'LOCK' button
 SOC signal from EMS

CLIMATE CONTROL SEAT

DRIVER SEAT CONTROLL SWITCH



CO-PASSENGER SEAT CONTROLL SWITCH



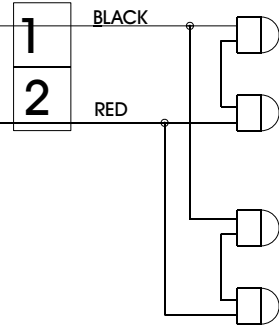
BACK ILL -12V when parking ON

RED

DC-DC CONVERTER

9V
GND
48V

FROM BATT
48V SUPPLY



BACK LIGHT ILLUMINATION
CCS SWITCH

GEMINI CDL CONTROLLER

IMMOBALIZER I/P	1
IMMOBALIZER O/P	2
	3
MASTER RHD/LHD	4
DOOR SW I/P	5
LED O/P	6
SW 12V	7
	8
FIND	9
SIREN O/P	10
UNSW 12V	11
GND	12
LOCK	13
UNLOCK	14
GND	15
UNSW 12V	16
TURN LEFT	17
Thro in Line FUSE	18
TURN RIGHT	19
MASTER	20

CN21

CN611
TO MAIN HARNESS

1	1
2	2

LED

1	2
---	---

CN114
TO AC HARNESS

1	1
2	2

CN303
TO CDL HARNESS

1	2	3	4	5	5	7	8
1	3	2	4	6	5	7	8

CN75

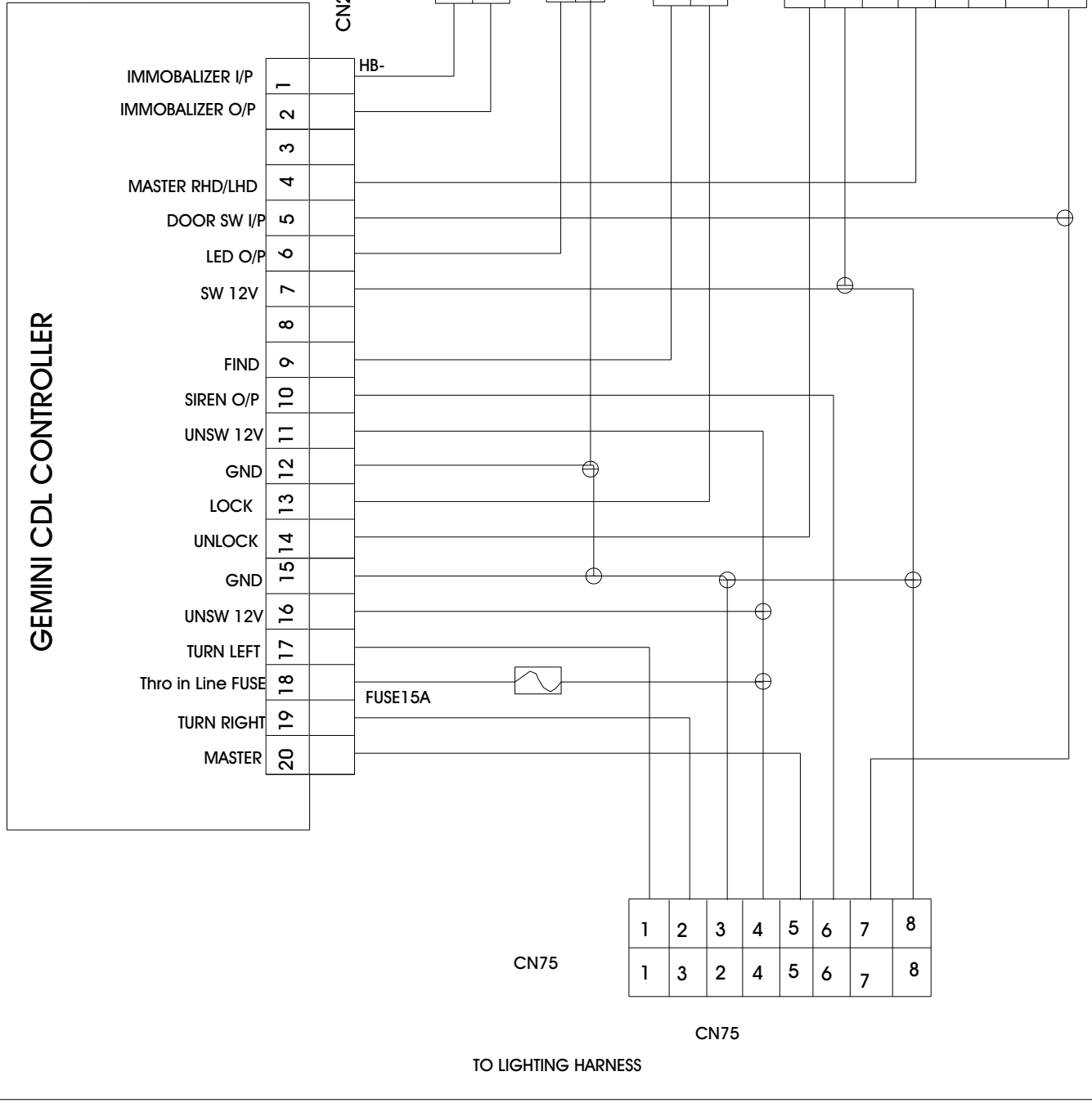
1	2	3	4	5	6	7	8
1	3	2	4	5	6	7	8

CN75

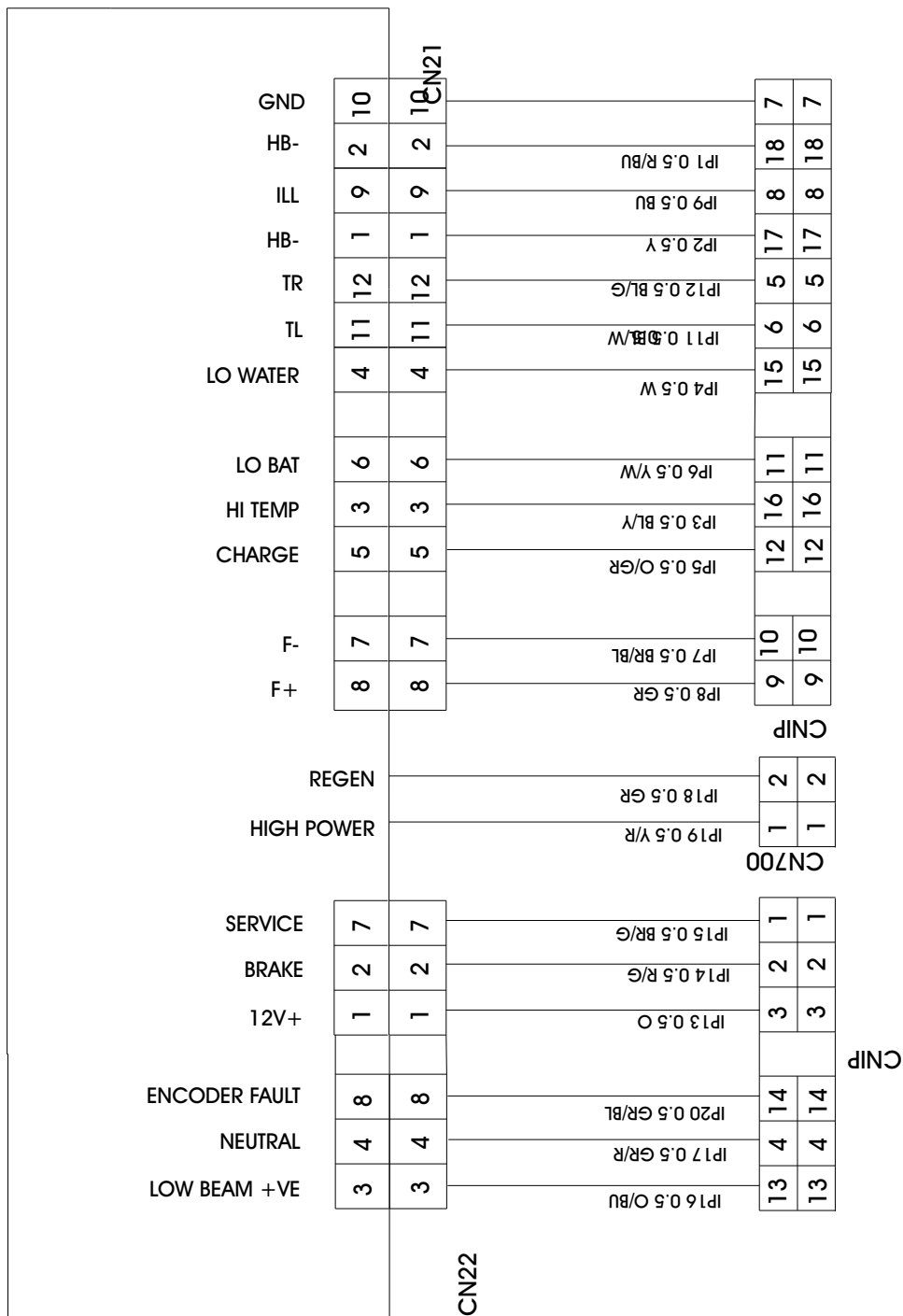
TO LIGHTING HARNESS

HB-

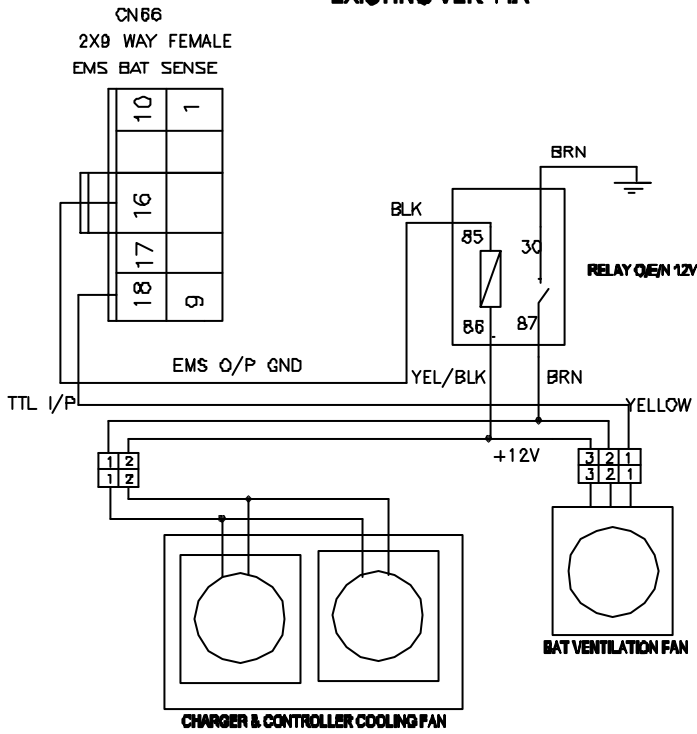
FUSE15A



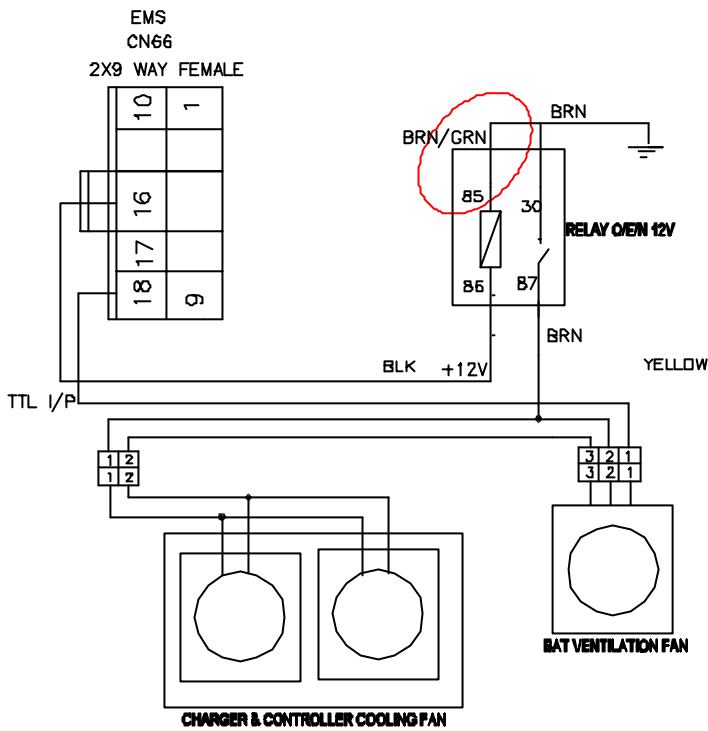
IP CLUSTER ASSEMBLY



EXISTING VER-11A



TO BE MODIFIED FOR VER-12



- 21
- 20
- 19
- 18
- 17
- 16
- 15
- 14
- 13
- 12
- 11
- 10
- 9
- 8
- 7
- 6
- 5
- 4
- 3
- 2
- 1

REVA ELECTRIC CAR COMPANY PVT. LTD., BANGALORE, INDIA

▽	0	▽	0	▽	0	▽	0
---	---	---	---	---	---	---	---

	-	DATE	14.02.07	REV
		TITLE	EMS VER-12 WIRING MODIFICATION	
		DRAWN	IREDDY	